

**Macsa id**  
a code you can trust

SPA F Pulsed

# FIBER PULSED LASER

Versatility to mark  
a wide range of plastics  
and metals



**SPA F Pulsed** by **MACSA**

Modular. Better. Complete

## SPA F Pulsed

SPA F Pulsed is a Fiber Laser specialized in coding and marking over a wide variety of materials such as films, plastics and metals and other industrial products

### High speed

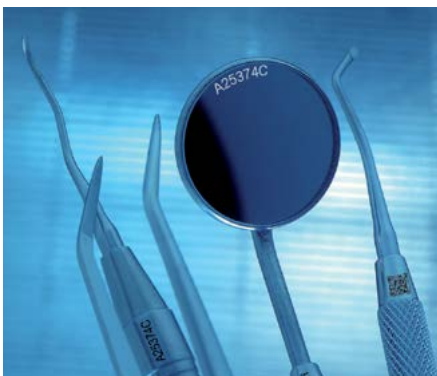
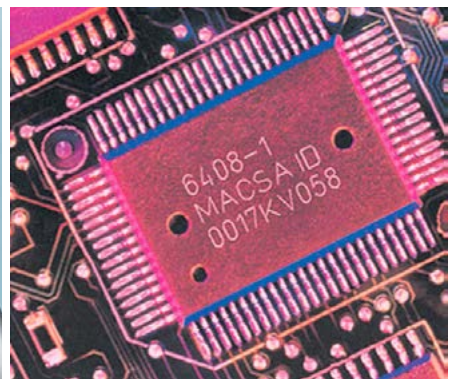
SPA F Pulsed codes and marks information at a very high speed maintaining an excellent definition, without interruptions even in the most hostile conditions.

### Excellent quality marking

SPA F Pulsed has been designed either for marking in metal, plastic and other materials in industrial sectors where an excellent quality marking is required.

### Environmentally friendly

Laser technology is environmentally friendly as it allows to reduce the costs of consumables, avoids generation of harmful emissions and the consumption of energy is minimum.



## SPA is much more than a laser system

**Precision.** Several features including Macsa's proprietary VCS\* to ensure high print quality even on high-speed production lines.



**Versatility.** Integrated into any production line, it can encode over a wide range of materials using 3D printing options.



**Reliability.** In adverse production environments thanks to IP54 guidelines.

**Connectivity.** Several softwares which enable it to be operated remotely as well as directly.




**Simplicity.** Videos and help material to facilitate its installation and integration.



**Adaptability.** Wide range of essential and extra accessories to optimise the laser's performance.

## Macsa 4.0 solutions and equipment

PRODUCTS	SERVICES	DATA
Management and control of the line production	Remote support 	Performance control



The modular software to control, manage and optimize the production line.



Maintaining Service

Equipment performance

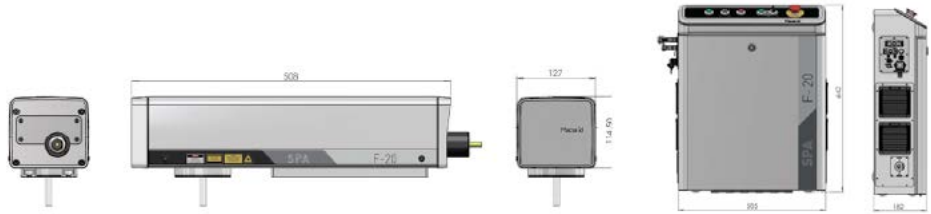
# Macsa id

A CODE YOU CAN TRUST

Coding, tracing and marking solutions worldwide



SPA F Pulsed



SPA F-10/F-20/F-30/F-50 Pulsed													
MODEL			PULSED										
POWER			10W			20W			30W			50W	
WAVELENGTH			1.062 μm										
LASER SYSTEM			F -10 PULSED			F -20 PULSED			F -30 PULSED			F -50 PULSED	
MAINS SUPPLY			100V - 240V 50 / 60 Hz (1 Phase + N) 400 VA			100V - 240V 50 / 60 Hz (1 Phase + N) 500 VA			100V - 240V 50 / 60 Hz (1 Phase + N) 600 VA			100V - 240V 50 / 60 Hz (1 Phase + N) 700 VA	
DIMENSIONS		Head	127x114,50x508 mm										
		Cabinet	182x642x505 mm						182x642x505 mm				
WEIGHT			Net weight: 26Kg - Gross Weight: 30Kg										
SYSTEM			Optical isolator and collimator of the laser source, galvanometric scanners built into the marking head. Control and power electronics, drivers of the digital scanners, CPU, power supplies and laser source built into the control cabinet.										
FOCAL SPECIFIC.	TECHNOLOGY			PULSED					PULSED UHS				
	MA (mm)	WD (mm)	FL (mm)	F -	10	20	30	50	F -	10	20	30	50
				BD (μm)	PD (KW/cm <sup>2</sup> )	PD (KW/cm <sup>2</sup> )	PD (KW/cm <sup>2</sup> )	PD (KW/cm <sup>2</sup> )	BD (μm)	PD (KW/cm <sup>2</sup> )	PD (KW/cm <sup>2</sup> )	PD (KW/cm <sup>2</sup> )	PD (KW/cm <sup>2</sup> )
	55x55	141	100	16	9709	19417	29126	48542	27	3482	6964	10446	17409
	100x100	205	163	26	3654	7308	10962	18270	44	1327	2653	3980	6634
	168x168	347	254	41	1505	3009	4514	7524	69	540	1079	1619	2698
	212x212	458	346	56	811	1622	2433	4054	94	291	582	873	1454
	242x242	554	420	68	551	1101	1652	2752	-	-	-	-	-
560x560	889	815	132	146	292	438	731	-	-	-	-	-	
LEGEND			WD:Working Distance FL:Focal Length MA:Marking Area BD:Spot Beam Diameter PD:Power Density										
IMPORTANT NOTE			<ul style="list-style-type: none"> <li>Working Distance (WD): The distance between the laser system base and the surface to be marked.</li> <li>Focal Length (FL): The distance between the center of the lens and the surface to be marked.</li> <li>Approximate values: These values are an approximation, and they are different for each laser system, due to the different optical paths.</li> </ul>										
SOFTWARE			<ul style="list-style-type: none"> <li>ScanLinux V5.2.7 and later.</li> <li>Marca Software V5.6.9 and later.</li> <li>Internal Barcode.</li> <li>Marca Lite Software.</li> </ul>										
USER INTERFACE			<ul style="list-style-type: none"> <li>Touch Screen.</li> <li>Hand Held Terminal.</li> <li>PC.</li> </ul>										
CONTROLLED BY			<ul style="list-style-type: none"> <li>Hand Held Terminal with ScanLinux software.</li> <li>Touch Screen with ScanLinux software.</li> <li>Full Graphics Interface: includes Marca™ software, dongle and Ethernet cable (TCP / IP).</li> <li>Marca Lite Software: includes Marca™ software, dongle and Ethernet cable (TCP / IP).</li> </ul>										
ACCESSORIES			Handheld Terminal-Touch Screen Terminal - Beam pointer - Encoder Kit - Photocell Kit - Alarm Kit - Fume Extractor - Mounting support - Mounting Bracket U-ARM - Marking paper - Protection goggles - Air Cooling Kit										
ENVIRONMENTAL CONDITIONS			+15°C (59°F) at 40°C (104°F) external temperature with 50% Duty Cycle or 36°C(100°F) external temperature with 100% Duty Cycle. Humidity between 10% and 95%, without condensation. No vibrations.										



**AVOID EXPOSURE**  
VISIBLE AND INVISIBLE  
LASER RADIATION  
IS EMITTED FROM  
THIS APERTURE  
CLASS 2 LASER PRODUCT  
EN 60825-1:2014

SPA F Pulsed by MACSA  
Modular. Better. Complete

Macsa id  
a code you can trust

